

# CERTIFICATE OF LOCATION OF GOVERNMENT CORNER

NORTH QUARTER Corner of Section 11, Township 107, Range 39, 5TH P.M.

STATE OF MINNESOTA, County of MURRAY

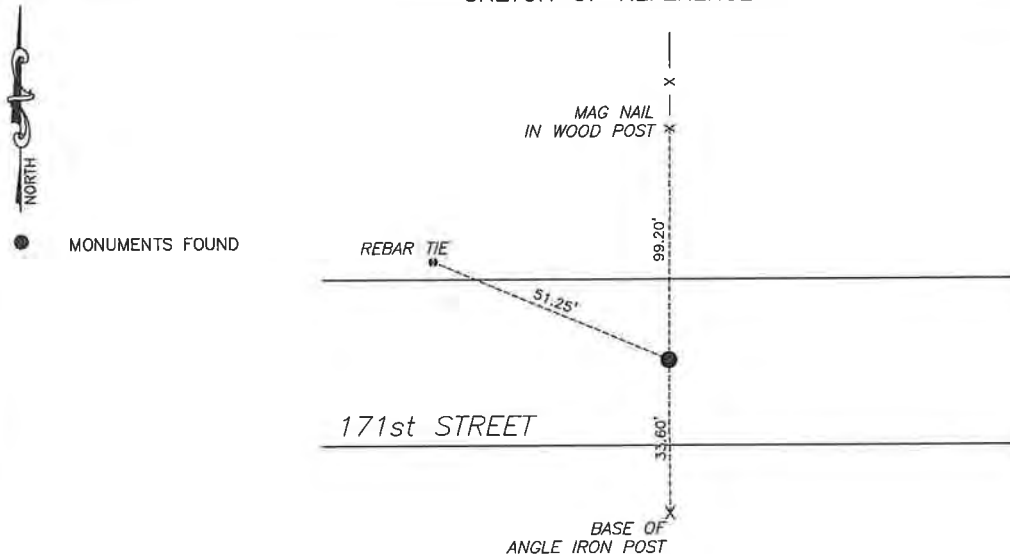
At the corner location shown on the sketch:

☒ On 4/3/2025 found a 1/2" iron with seal #12967  
DATE

☒ left monument as found, ☐ lowered monument, ☐ removed monument (explain)

☐ On \_\_\_\_\_ placed a \_\_\_\_\_  
DATE

## SKETCH OF REFERENCE TIES



Murray County  
Coordinate System NAD83 (1996)

N: 189969.105  
E: 572050.787

WGS84

LAT: 44°05'40.2392"  
LON: -95°29'32.7920"

Statement of evidence relative to this corner location is on back of page.

I hereby certify that this document and the data contained herein was prepared by me or under my direct supervision.

Daniel L. Bueltel  
License No. 43844

6/19/2025  
DATE

JUN 27 2025

MURRAY COUNTY RECORDER

Statement of Evidence

NORTH QUARTER CORNER SECTION 11, T107N, R39W OF THE 5th P.M.

In July of 1861, J.W. Myers surveyed the township lines.

In September of 1861, L. Brockmann subdivided the township.

In September 1980 LS#12967 found a field stone at the corner and placed a  $\frac{1}{2}$ " iron and cap above it.

In May 2016 Highway Department found an iron with a cap.

In September 2020 Westwood Professional Services searched and found an iron with cap LS #12967 at the corner.

On April 3, 2025, Bueltel-Moseng Land Surveying found a  $\frac{1}{2}$ " iron with seal #12967 at the corner.